

# The MAGIC OF READING

2007 Read To Me Conference  
Hawaii Convention Center • June 28-29, 2007

Welcome to *"The Magic of Reading" 2007 Read To Me Conference* where everything you could possibly hope for in a children's literacy conference will magically appear. Join us for two days of sheer joy and inspiration as you hear outstanding authors, speakers, and presenters cast their spell on you and leave you excited to engage in your child's world of books and literacy!

Whether you're an early childhood educator, an elementary or middle school teacher, a librarian, a parent, a caregiver, a children's program manager, or just someone who is interested in sharing the love and joy of reading aloud, this conference is for you!

DISCOVER "THE MAGIC OF READING"!

Join us for:

- Information on why reading aloud is important at every stage of a child's development
- Practical ideas to incorporate reading aloud into everyday activities
- Read-aloud tips and techniques
- Storytelling ideas
- Hands-on and standards-based workshops
- Interaction with friends and colleagues
- Read-To-Me FUN!



## Featured Authors

### Mem Fox



Mem Fox is Australia's best loved picture-book author. She was also an Associate Professor in Literacy Studies at Flinders University in Adelaide, Australia, where she taught teachers for twenty-four years until her retirement in 1996.

Mem's first book, *Possum Magic*, published in 1983, was the best selling children's book ever in Australia with sales of almost three million. She has written thirty picture books for children and five non-fiction books for adults, including the best selling *Reading Magic*, aimed at parents of very young children.

Over the years Mem has received many academic and civic awards in Australia and was a finalist in the Australian of the Year award in 2004. She is now a much sought-after international consultant in literacy, although she pretends to sit around and write full time.



### Rosemary Wells

Born in 1943, in New York City, Rosemary Wells grew up in New Jersey with both her parents in the theatre. She spent most of her childhood outdoors, roaming the woods and playing baseball. Nights were spent indoors, drawing.

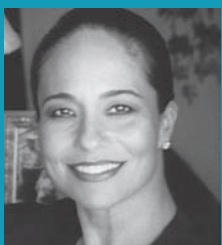
Rosemary went to Museum School in Boston (part of Tufts) and left early to put her husband through architecture school. She began publishing children's books in 1968, after working several years in the design departments of two publishers. She has published over 120 books for both older kids and younger readers. This year, her novel about the American Civil War, *Red Moon at Sharpsburg*, will be published.

Rosemary reads and studies widely, and publishes in many different areas. She says this constant curiosity is what gets her up in the morning and causes her to put out the lights with reluctance at night.



## Luncheon Speakers

### Elizabeth Kapu'uwailani Lindsey, Ph.D



Raised by native Hawaiian elders, Dr. Elizabeth Kapu'uwailani Lindsey is an esteemed international speaker who captivates audiences with her passion for ancestral wisdom. Such ancient knowledge has much to offer a modern world. Her speaking engagements include Capitol Hill, Harvard University, the Smithsonian Institute, and the American Museum of Natural History.

Dr. Lindsey's 1995 award-winning documentary *Then There Were None* has become a Hawaiian history classic. The film, which is used in universities throughout the world for the advancement of cultural diversity, has just been released on DVD with both Hawaiian and English narration.

A former Miss Hawai'i, Dr. Lindsey serves as an advisor to the Trustees of the Kamehameha Schools, the Mauna Kea Astronomy Educational Center, the University of Hawai'i at Hilo, as well as a member of the board of PBS Hawai'i.

### Derek Kurisu



Derek Kurisu has an ambitious goal: to make the Big Island and Hawai'i the greatest place on earth. The Executive Vice President of Perishable Operation for KTA Super Stores on the Big Island, Derek has been with his family's business for 38 years, having held positions such as clerk and meat cutter. His greatest business accomplishment is creating Mountain Apple Brand products, a private label which promotes local products and currently features over 285 items and 80 business partnerships.

Derek uses Mountain Apple Brand products as "teaching tools" for students, businesses and non-profit organizations, and he also produces three cable television programs, *Living in Paradise*, *Seniors Living in Paradise*, and *Live in Paradise*. A member of numerous advisory boards, Derek has received many awards, the most recent being the State of Hawai'i Friend of Agriculture Award in 2006.

# Conference Info



## Accommodations

The Ala Moana Hotel is offering special conference room rates starting from \$139\* plus tax per night. The hotel is located on 410 Atkinson Drive, across from the Hawai'i Convention Center and adjacent to the Ala Moana Shopping Center.

For more information or to make a reservation, call 955-4811 if calling from Oahu, 1(800) 446-8990 if calling from the neighbor islands, or 1(800) 367-6025 if calling from the mainland United States. Please ask for the Read To Me Conference rate when making reservations

\*Rates are guaranteed through May 27, 2007. After May 27, 2007, the special conference rate will be based on space availability only.



## Parking

Ample parking is available for \$5 per exit at the Hawai'i Convention Center. The Center does not allow overnight parking. The parking entrance is located on Kalakaua Avenue, across from the Hard Rock Café.



## Driving Directions

The Hawai'i Convention Center is located at 1801 Kalakaua Avenue, at the edge of Waikiki, on the corners of Kalakaua Avenue and Kapiolani Boulevard.

## Professional Development

Professional development credits are available for DOE teachers. Please contact Patricia Nichols at patricia\_nichols@notes.k12.hi.us for more information.

For early childhood educators, information regarding ASK Core Area credits toward the Registry will be posted on ReadToMeIntl.org in the conference section.



## Americans with Disabilities Act

If you need accommodation for a disability covered by Federal or State disability laws, please contact us at (808) 955-7600 at least 15 days prior to the event. If you are deaf or hard of hearing, please feel free to contact us via the relay system. Call 1 (877) 447-5990 for TTY service if calling from Hawaii, or 711 if calling from anywhere within the United States.



### CONFERENCE SPONSORS



## Schedule

<b>Thursday, June 28, 2007</b>		Emcee: Lynne Madden
7:30 – 8:30 a.m.	Registration/Continental Breakfast	
8:30 – 10:00 a.m.	Opening Plenary Session – Mem Fox	
10:00 – 11:00 a.m.	Book Signing/Vendors	
11:00 – 11:45 a.m.	Community Building Session	
11:45 a.m. – 1:15 p.m.	Luncheon Session – Dr. Elizabeth Lindsey	
1:30 – 2:45 p.m.	Concurrent Sessions I	
3:00 – 4:15 p.m.	Concurrent Sessions II	
<b>Friday, June 29, 2007</b>		Emcee: Wally Amos
7:30 – 8:30 a.m.	Registration/Continental Breakfast	
8:30 – 9:30 a.m.	Plenary Session – Rosemary Wells	
9:30 – 10:30 a.m.	Book Signing/Vendors	
10:30 – 11:45 a.m.	Hawai'i Authors Panel	
11:45 a.m. – 1:15 p.m.	Luncheon Session – Derek Kurisu	
1:30 – 2:45 p.m.	Concurrent Sessions III	
3:00 – 4:00 p.m.	Story Book Fun	

